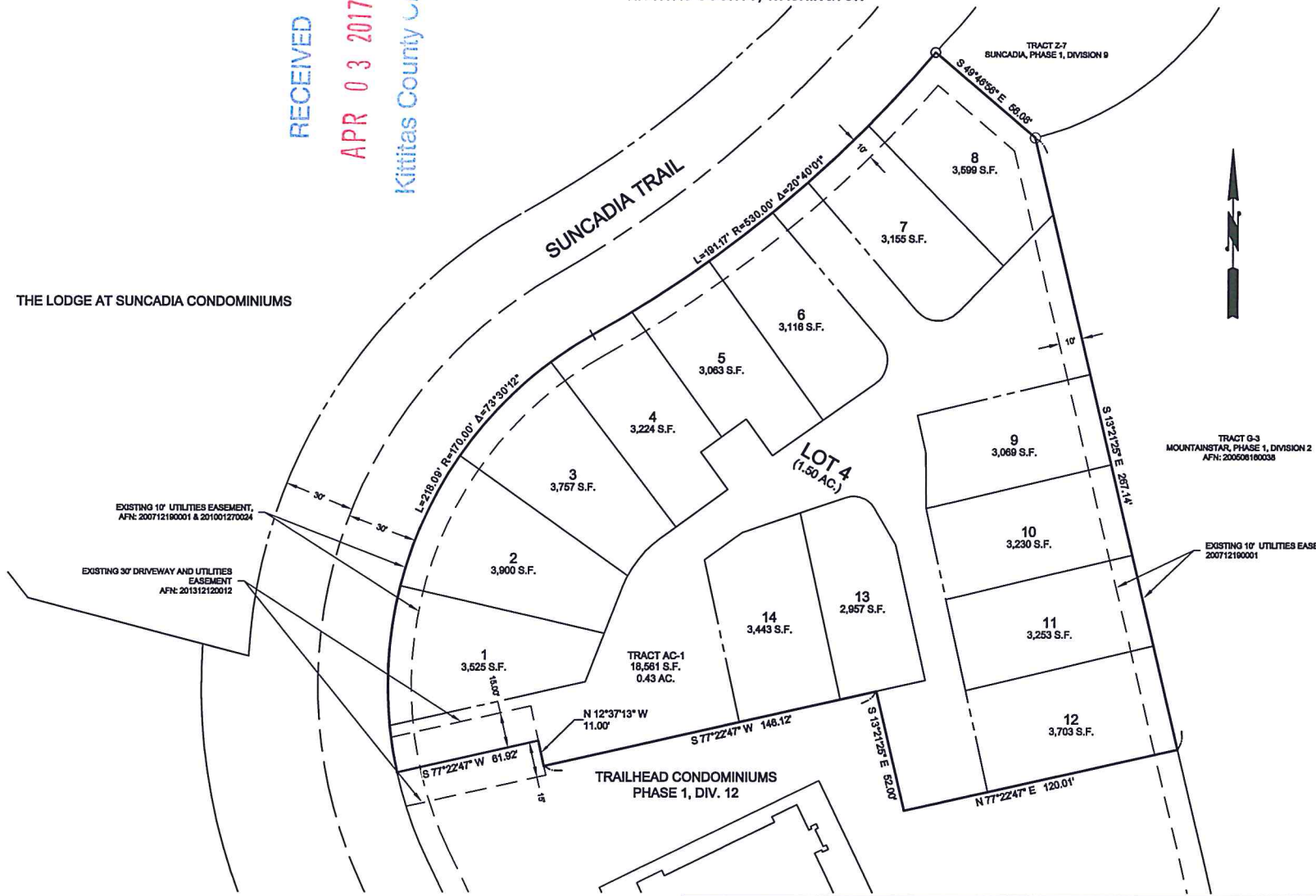
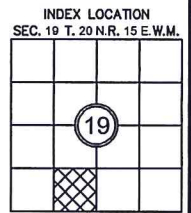
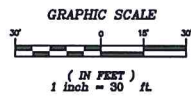


**TRAILHEAD**  
**SUNCADIA - PHASE 1, DIVISION 12A**  
 A PORTION OF SECTION 19, T. 20 N., R. 15 E., W.M.,  
 KITTITAS COUNTY, WASHINGTON

RECEIVED  
 APR 03 2017  
 Kittitas County CLS



THE LODGE AT SUNCADIA CONDOMINIUMS



<b>PRELIMINARY PLAT</b> PREPARED FOR HIGHWAY 9 OFFICE PARK CENTER, LLC A PORTION OF SECTION 19, TOWNSHIP 20 NORTH, RANGE 15 EAST, W.M. KITTITAS COUNTY WASHINGTON		
DWN BY	DATE	JOB NO.
DLP	3/2017	16080
CHKD BY	SCALE	SHEET
GW	1" = 30'	2 OF 3

Western Washington Division  
 165 NE Juniper Street, Suite 201 • Issaquah, WA 98027 • Phone: (425) 392-0250 • Fax: (425) 391-3055  
 Eastern Washington Division  
 407 Swiftwater Blvd. • Cle Elum, WA 98922 • Phone: (509) 674-7433 • Fax: (509) 674-7419